

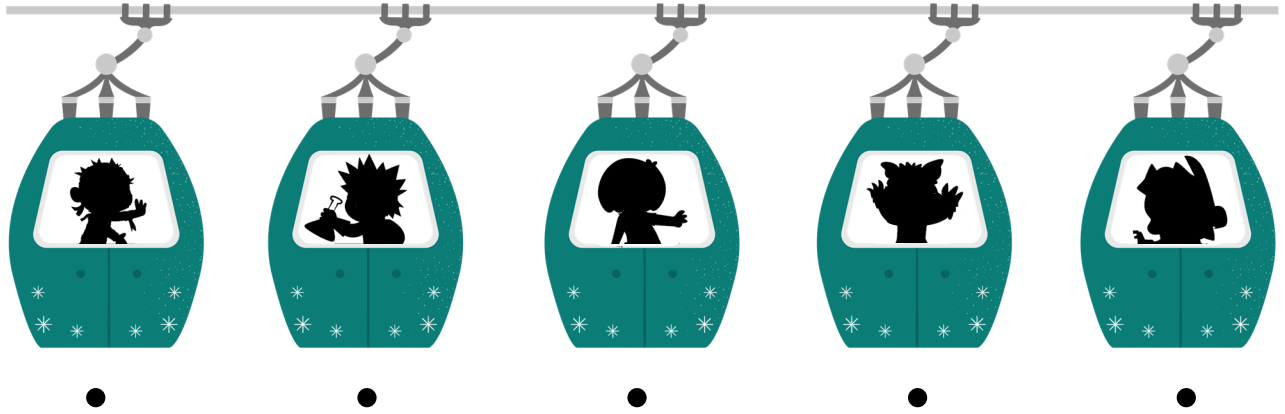
The background is a light orange color with a repeating pattern of Halloween-themed elements. There are several pumpkins, some of which are carved into jack-o'-lanterns with various faces. Interspersed among the pumpkins are pieces of candy corn (yellow, orange, and white) and several autumn leaves in shades of brown, orange, and green. A small white ghost with large black eyes and a red mouth is visible near the top center. The word "BOO" is written in a stylized, bubbly font in orange and white, appearing twice on the page. A central white rectangular box with a dark brown border contains the text "Ce livret appartient à :".

Ce livret appartient à :

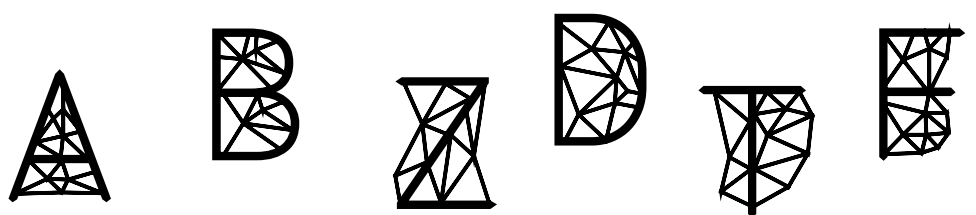
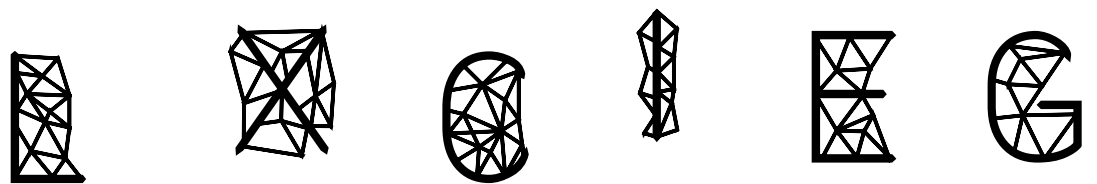
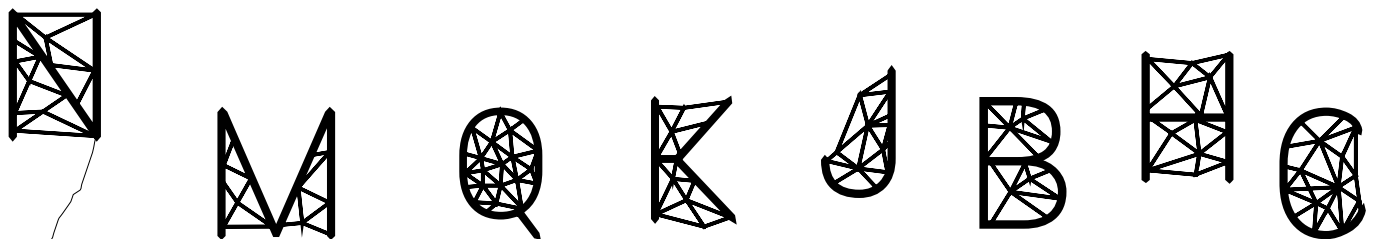
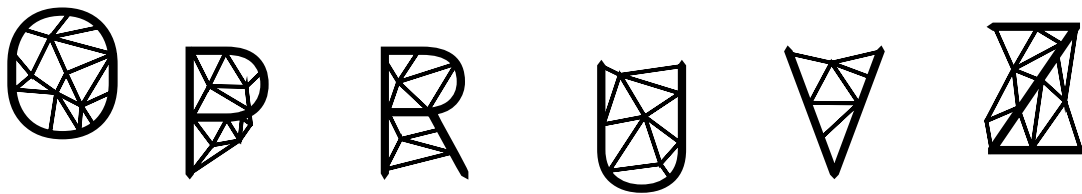
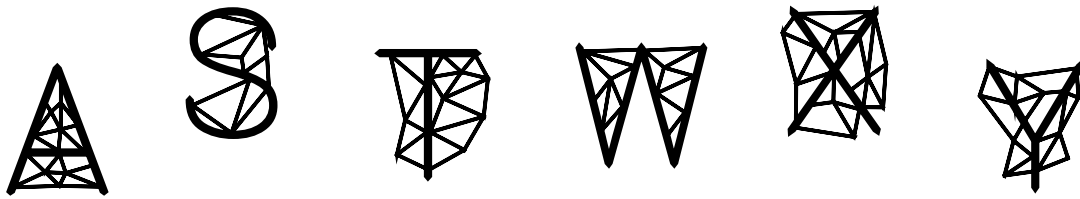
.....



Relie chaque personnage à sa cabine.



Aide le chien à retrouver ses os, trace son chemin en reliant les lettres dans l'ordre alphabétique.



Colorie.



# Associe ...



3



5



1



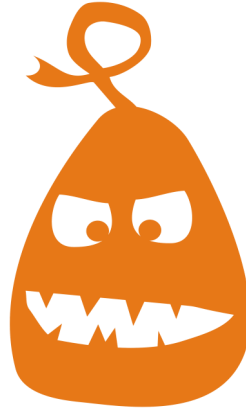
4



2

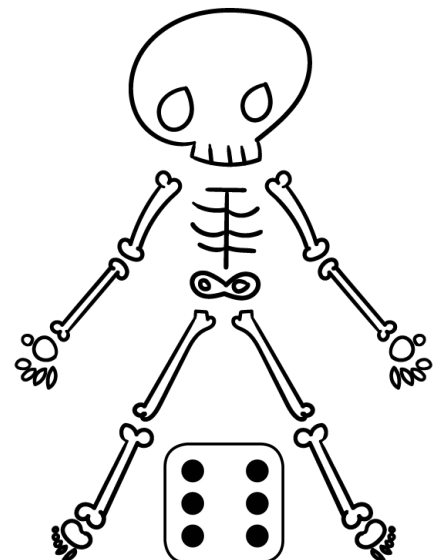
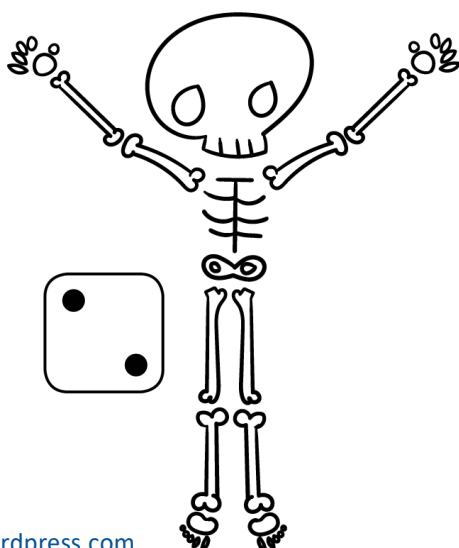
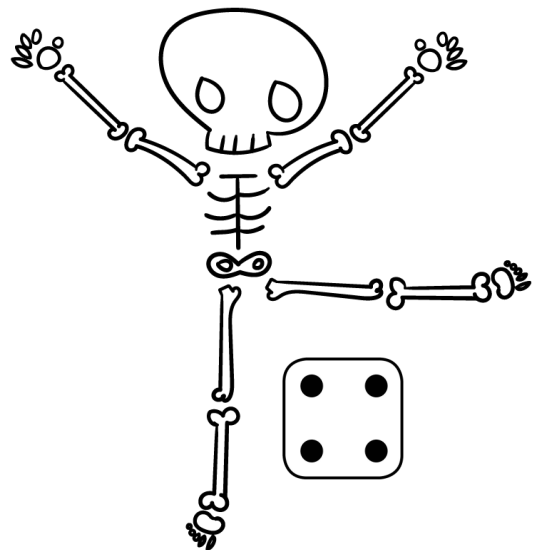
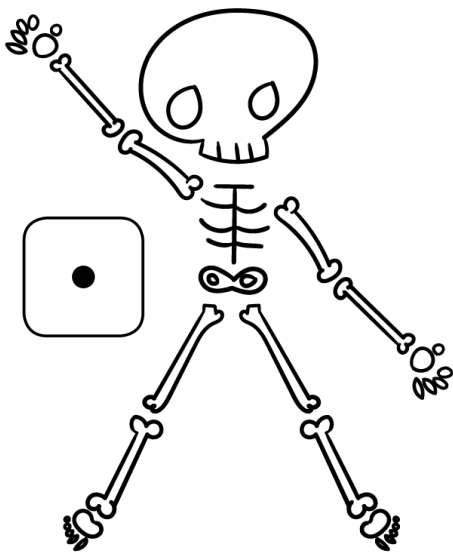
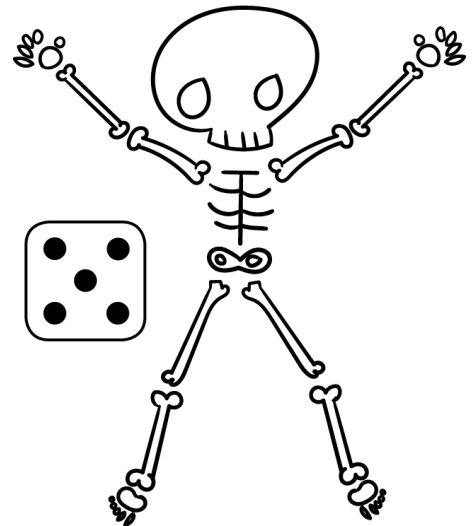
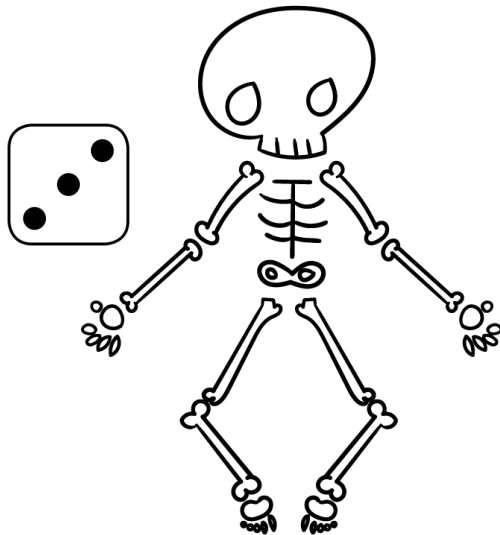


Trouve les deux citrouilles identiques ...



Un peu de gymnastique.

Essaie de reproduire les positions du squelette selon le lancer de ton dé.

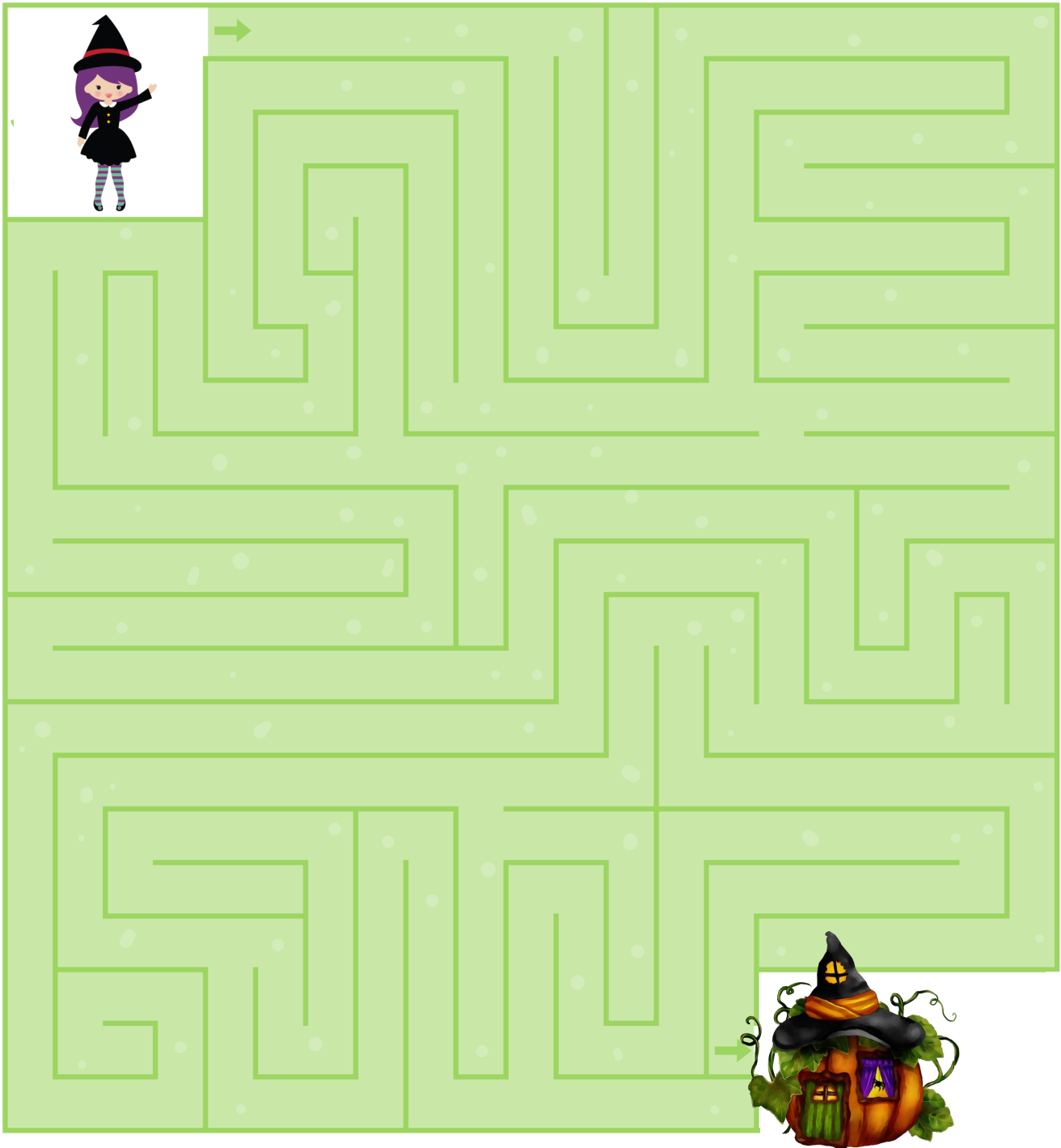


Relie les chiffres de 1 à 9 dans l'ordre afin d'aider *Pumpkin* à récolter ses bonbons.





Sorcelyna s'est perdue dans la forêt, aide-là à retrouver sa maison.



Associe chaque boisson à son ombre.



Aide Mélissandre, la petite Sorcière, à retrouver sa potion verte !



Pour Halloween, tu auras peut-être la chance de creuser une citrouille... Garde les pépins, ils pourront t'aider à résoudre ces petites additions !

Note le résultat ou relie chaque case au bon résultat.

$$\begin{array}{c} \text{pépin} \\ \text{pépin} \end{array} + \begin{array}{c} \text{pépin} \\ \text{pépin} \end{array} = \boxed{?}$$

7

$$\text{pépin} + \begin{array}{c} \text{pépin} \\ \text{pépin} \\ \text{pépin} \\ \text{pépin} \end{array} = \boxed{?}$$

5

$$\begin{array}{c} \text{pépin} \\ \text{pépin} \end{array} + \begin{array}{c} \text{pépin} \\ \text{pépin} \\ \text{pépin} \end{array} = \boxed{?}$$

4

$$\begin{array}{c} \text{pépin} \\ \text{pépin} \end{array} + \begin{array}{c} \text{pépin} \\ \text{pépin} \end{array} = \boxed{?}$$

8

$$\begin{array}{c} \text{pépin} \\ \text{pépin} \\ \text{pépin} \\ \text{pépin} \end{array} + \begin{array}{c} \text{pépin} \\ \text{pépin} \\ \text{pépin} \end{array} = \boxed{?}$$

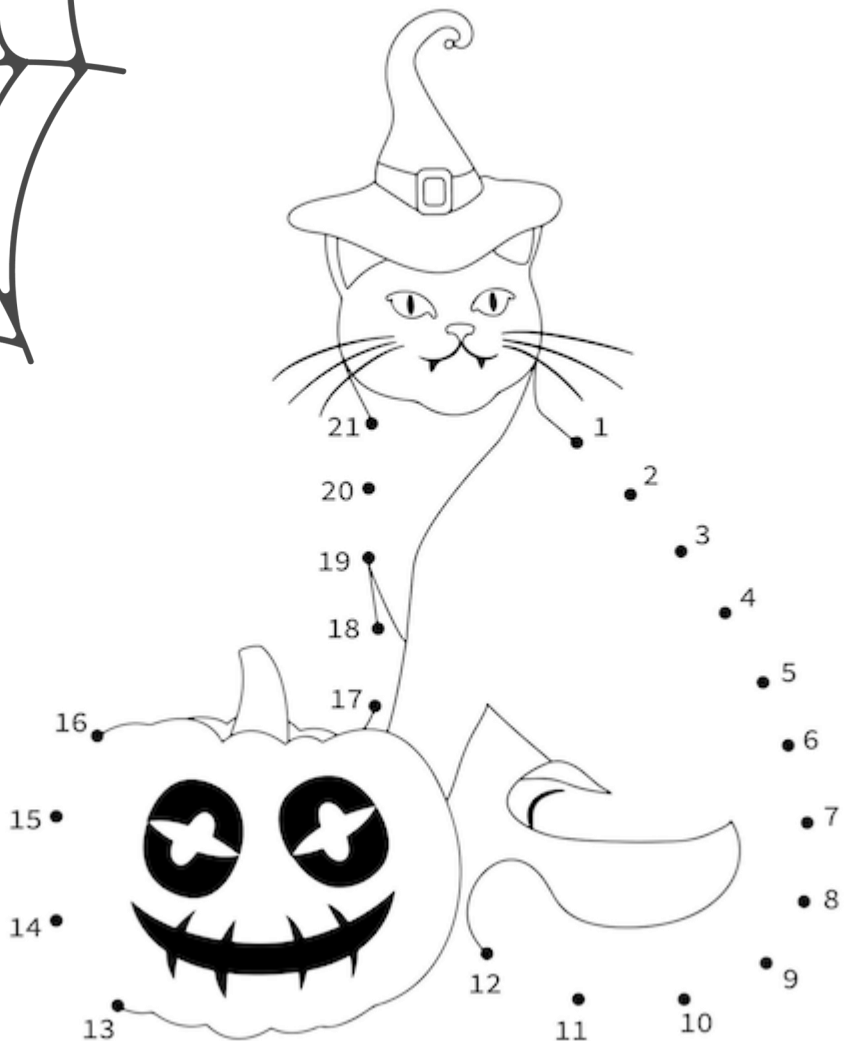
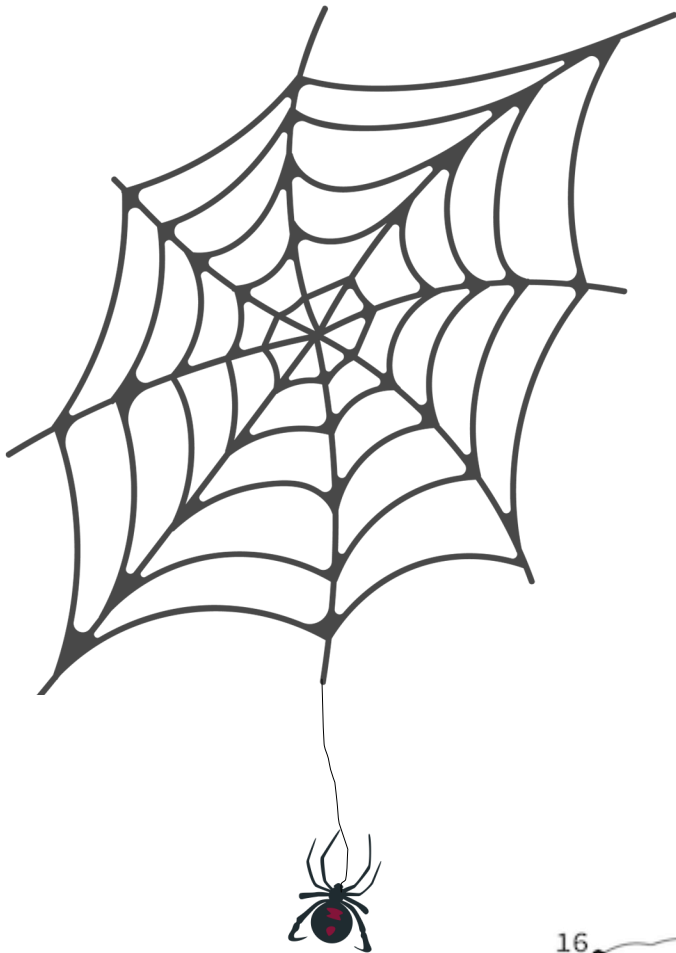
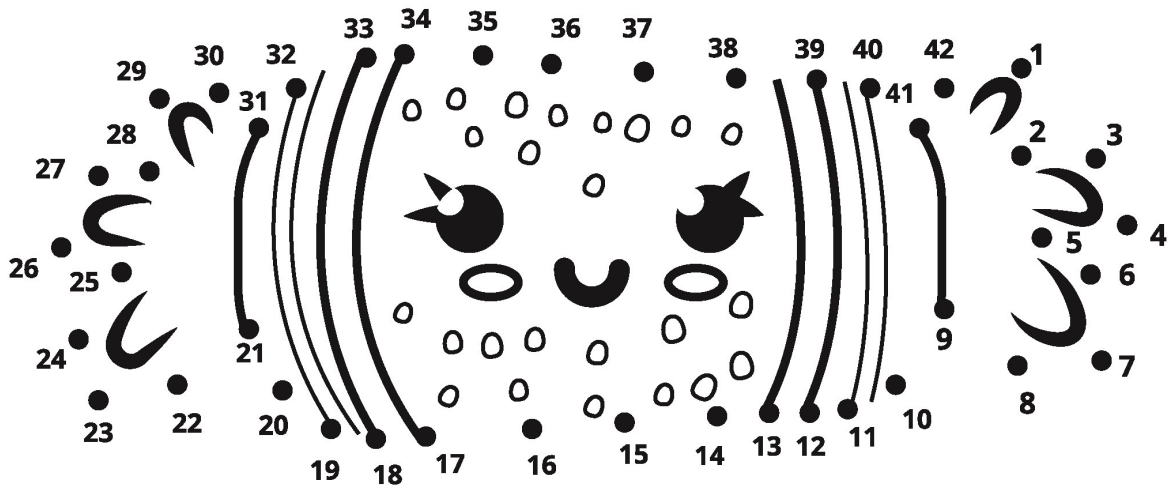
6

$$\begin{array}{c} \text{pépin} \\ \text{pépin} \\ \text{pépin} \\ \text{pépin} \\ \text{pépin} \end{array} + \begin{array}{c} \text{pépin} \\ \text{pépin} \\ \text{pépin} \end{array} = \boxed{?}$$

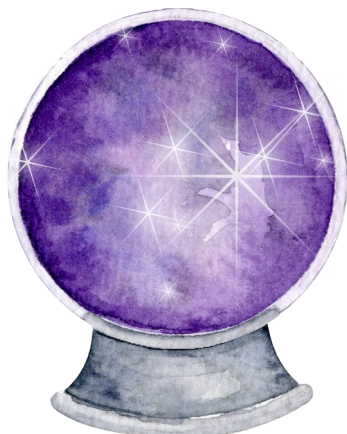
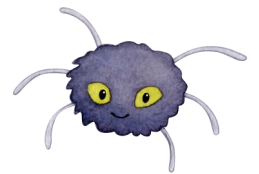
9



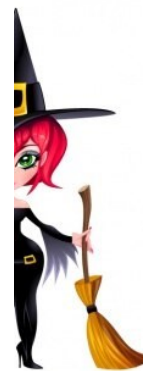
Relie les points.



Entoure les images dont le nom commence par le « son b ».



Relie chaque sorcière à sa moitié.



Découpe ton masque.

**HALLOWEEN**

